



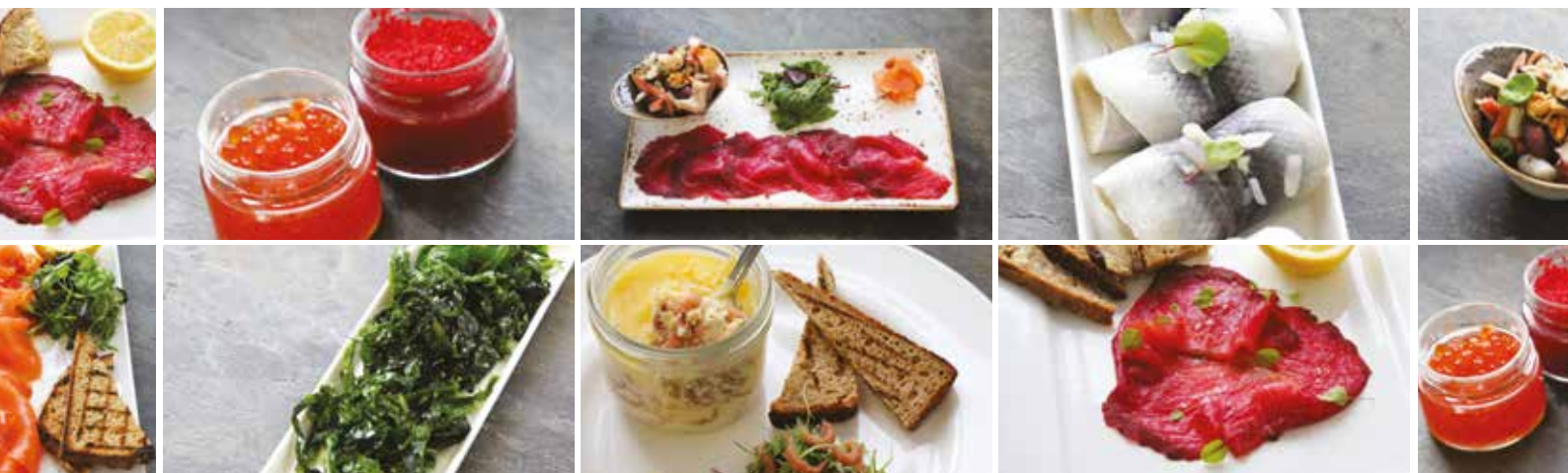
# SPECIALIST & DELI RANGE

Product Brochure

# WELCOME

We are fresh fish specialists, but we also have an extensive range of coated, deli, and frozen lines. This is alongside chef essential items such as cooking wines, stocks, and sauces.

This brochure showcases our Specialist and Deli Range for 2021.  
For more information and prices or if you would also like a copy of our coated or frozen brochure, please contact your account manager.



# CONTENTS

| TITLE                             |  | PAGE         |
|-----------------------------------|--|--------------|
| <b>Smoked &amp; Cured</b>         | <i>Cod, Coley, Haddock, Kippers, Mackerel, Mussels, Prawn, Salmon, Gravdax, Cod, Sprats, Swordfish, Trout, Tuna.</i> | <b>3 - 6</b> |
| <b>Marinated</b>                  | <i>Anchovies, Cockles, Crayfish, Herring, Mussels, Prawn, Sardine, Seafood Salad, Tuna.</i>                          | <b>6 - 7</b> |
| <b>Shellfish</b>                  | <i>Crab.</i>   | <b>7</b>     |
| <b>Roes and Caviars</b>           |  | <b>8 - 9</b> |
| <b>Seaweed and Sea Vegetables</b> |  | <b>10</b>    |
| <b>Alternatives</b>               | <i>Miscellaneous.</i>  | <b>11</b>    |

# SMOKED & CURED

| DESCRIPTION   | CODE          |
|---|---------------|
| Cod: Smoked Roe (Kg)  | 05CODR00K0A   |
| Coley: Smoked (Kg)  | 05COL00K0A    |
| Haddock: Fillet - Natural Smoked (3Kg Case) <i>*Also available frozen</i> | 05HAD00E4V    |
| Haddock: Fillet - Natural Smoked (Kg) <i>*Also available frozen</i>       | 05HAD00K0A    |
| Haddock: Fillet - Angel Cut Natural Smoked (Kg)                           | 05HADA00K0A   |
| Haddock: Fillet - Broken Natural Smoked (Kg)                              | 05HADB00K0A   |
| Haddock: Fillet Enderby - Natural Smoked (Kg)                             | 05HADEN00K0A  |
| Haddock: Fillet Natural Smoked - Skinless (Kg)                            | 05HADS00K0A   |
| Haddock: Fillet Smoked - Dyed Yellow (Kg) <i>*Also available frozen</i>   | 05HADY00K0A   |
| Kippers: Whole (3Kg Case) <i>*Also available frozen</i>                   | 05KIP000E4V   |
| Kippers: Whole (Kg) <i>*Also available frozen</i>                         | 05KIP00K0A    |
| Kippers: Fillet (Kg) <i>*Also available frozen</i>                        | 05KIPF00K0A   |
| Kippers: Fillet (3Kg Case) <i>*Also available frozen</i>                  | 05KIPFV00E4V  |
| Kippers: Manx (Kg) <i>*Also available frozen</i>                          | 05KIPM00K0A   |
| Mackerel: Whole - Smoked (Kg)   | 05MAC00K0A    |
| Mackerel: Fillet - Smoked (Kg) <i>*Also available frozen</i>              | 05MACF00K0A   |
| Mackerel: Fillet - Smoked - Peppered (Kg) <i>*Also available frozen</i>   | 05MACP00K0A   |
| Mussels (In Shell) : Smoked - 500Gm Nett Pack (Each)                      | 05MUS00E2K    |
| Mussels: Meat - Smoked 500Gm Pack (Each)                                  | 05MUSMSW00E2N |
| Prawn: Smoked Shell On (500Gm Nett Pack)                                  | 05PRA00E2N    |
| Salmon: Smoked - Sliced (100Gm Nett Pack)                                 | 05SAL00E0Q    |
| Salmon: Smoked - Sliced (150Gm Nett Pack)                                 | 05SAL00E0Z    |
| Salmon: Smoked - Sliced (200Gm Nett Pack)                                 | 05SAL00E1F    |
| Salmon: Smoked - Sliced (250Gm Nett Pack)                                 | 05SAL00E1M    |
| Salmon: Smoked - Sliced (400Gm Nett Pack)                                 | 05SAL00E2G    |
| Salmon: Smoked - Sliced (454Gm Nett Pack) <i>*Special order only</i>      | 05SALL00E2K   |



# SMOKED & CURED

| DESCRIPTION  | CODE           |
|--|----------------|
| Salmon: Smoked - D Cut Side (Kg)                             | 05SALD00K0A    |
| Salmon: Smoked - Long Cut Sides (Kg)                         | 05SALL00K0A    |
| Salmon: Smoked - Unsliced Side (Kg)                          | 05SALU00K0A    |
| Salmon: Smoked - Unsliced Fully Trimmed Side (Kg)            | 05SALUT00K0A   |
| Salmon: Smoked 36 Hour - D Cut (Kg)                          | 05SALL36K0A    |
| Salmon: 36 Hour Smoked - Unsliced Side (Kg)                  | 05SALU36K0A    |
| Salmon: Smoked - Traditional Oak Smoked - D Cut Side (Kg)    | 05SALDTSW00K0A |
| Salmon: Smoked - D Cut - Welsh Cure (Kg)                     | 05SALDS00K0A   |
| Salmon: Smoked - Lightly Cured (Kg)                          | 05SALC00K0A    |
| Salmon: Smoked - Balic - Side (Kg)                           | 05SALSBA00K0A  |
| Salmon: Smoked - D Cut King Cure (Kg)                        | 05SALDKSW00K0A |
| Salmon: Smoked - King Cure Long Cut Side (Kg)                | 05SALLKSW00K0A |
| Salmon: Smoked - Untrimmed - Severn & Wye King Cure (Kg)     | 05SALUKSW00K0A |
| Salmon: Smoked - Traditional Var - D Cut Side (Kg)           | 05SALDVA00K0A  |
| Salmon: Smoked - Traditional Var - Long Cut Side (Kg)        | 05SALLVA00K0A  |
| Salmon: Smoked - Beetroot - D Cut Side (Kg)                  | 05SALBD00K0A   |
| Salmon: Smoked - Gin Cure - D Cut (Kg)                       | 05SALDGO0K0A   |
| Salmon: Smoked - Side Lemon Dill & Black Pepper - D Cut (Kg) | 05SALDLDP00K0A |
| Salmon: Smoked - Orange & Tarragon - D Cut Side (Kg)         | 05SALDO00K0A   |



(Smoked Salmon)

# SMOKED & CURED

| DESCRIPTION  | CODE           |
|--|----------------|
| Salmon: Cured - Red Wine D Cut Side (Kg) <i>*Only available frozen</i>   | 05SALDRW00K0A  |
| Salmon: Smoked - Treacle Cure Fully Trimmed Side (Kg)                    | 05SALTT00K0A   |
| Salmon: Smoked - Whisky Cured - Long Cut Side (Kg)                       | 05SALLWC00K0A  |
| Salmon: Smoked - Whisky & Dill - Sliced (Kg)                             | 05SALWHD00K0A  |
| Salmon: Smoked - Organic D Cut Side (Kg)                                 | 05SALDOGL00K0A |
| Salmon: Smoked - Organic - Long Cut Side (Kg) <i>*Special order only</i> | 05SALOL00K0A   |
| Salmon: Freedom Foods - Smoked - Long Cut Sides (Kg)                     | 05SALLF00K0A   |
| Salmon: Smoked - Trimmings (200Gm Nett Pack)                             | 05SALT00EIF    |
| Salmon: Smoked - Trimmings (500Gm Nett Pack)                             | 05SALT00E2K    |
| Salmon: Smoked - Trimmings Sugar Free (500Gm Nett Pack)                  | 05SALTSF00E2K  |
| Salmon: Smoked - Kedgeriee D Cut (100Gm Nett Pack)                       | 05SALDKRE00E0Q |
| Salmon: Hot Smoked Side (Kg)   | 05SALH00K0A    |
| Salmon: Hot Smoked - Star Anise Ginger & Orange (Kg)                     | 05SALHSA00K0A  |
| Salmon: Hot Smoked Flakes (500Gm Nett Pack)                              | 05SALHF00E2N   |
| Salmon: Hot Smoked Flakes Sugar Free (500Gm Pack)                        | 05SALHFSF00E2N |
| Gravadlax: Sliced Side D Cut (Kg)  | 05GRAD00K0A    |
| Gravadlax: Unsliced Side (Kg)  | 05GRA00K0A     |
| Gravadlax: Sliced (200Gm Nett Pack)                                      | 05GRA00EIF     |
| Gravadlax: Beetroot - Sliced D Cut Side (Kg)                             | 05GRAB00K0A    |
| Gravadlax: Beetroot - Unsliced Side (Kg)                                 | 05GRABU00K0A   |
| Gravadlax: Beetroot (200Gm Nett Pack)                                    | 05GRAB00EIF    |
| Gravadlax: Orange & Tarragon - Sliced D Cut Side (Kg)                    | 05GRADO00K0A   |
| Gravadlax: Wasabi & Lime - Sliced D Cut Side (Kg)                        | 05GRADW00K0A   |
| Gravadlax: Wasabi & Ginger - Sliced D Cut Side (Kg)                      | 05GRADWG00K0A  |
| Cod: Salted Fillet (Kg)  | 07CODS00K0A    |

# SMOKED & CURED

---

| DESCRIPTION   | CODE         |
|---|--------------|
| Sprats: Whole Smoked (Kg)                                       | 05SPR00K0A   |
| Swordfish: Fillet - Smoked (200Gm Nett Pack)                    | 05SWO00E1F   |
| Trout: Fillet - Smoked (500Gm Nett Pack)                        | 05TRO00E2N   |
| Trout: Fillet - Smoked - (2 Fillets Per Pack) (125Gm Nett Pack) | 05TRO00E7W   |
| Trout: Smoked Sea Reared - L Cut Side (Kg)                      | 05TROS00K0A  |
| Trout: Smoked Sea Reared - D Cut (Kg)                           | 05TOSRD00K0A |
| Tuna: Smoked Fillet (200Gm Nett Pack)                           | 05TUN00E1F   |

# MARINATED

---

| DESCRIPTION                             | CODE        |
|---|-------------|
| Anchovies: Salted 800Gm Tin (Each)      | 07ANCS00E3K |
| Anchovies: Salted 1Kg Tub (Each)        | 07ANCS00E3Q |
| Anchovies: In Oil - 1Kg Tub (Each)      | 07ANC00E3Q  |
| Cockles: In Brine (Large Tub)           | 07COCB00E4I |
| Crayfish: In Brine (900Gm Nett Tub)     | 07CRAB00E3M |
| Herring: Dill Marinade (Large Tub)      | 07HERD00E4P |
| Herring: Sweetcure Marinade (Large Tub) | 07HERS00E4U |
| Herring: Rollmops (Large Tub)           | 07ROL00E4V  |

# MARINATED

---

DESCRIPTION

CODE

Prawn: In Brine (900Gm Tub)

07PRA00E3M

Prawn: In Brine (1.5Kg Tub)

07PRAB00E4A

Sardine: In Oil With Basil (1Kg Tub)

07SARO00E3Q

Seafood Salad In Oil (1Kg Tub)

07SEAO00E3Q

Tuna: Pouch In Brine (1Kg Pack)

07TUN00E3Q

Tuna: Chunk - Tinned In Brine (1.320 Drained Weight)

07TUNPF00E4F

---



(Brown Peeled  
Shrimp)



# ROES & CAVIARS

---

| DESCRIPTION  | CODE           |
|--|----------------|
| Caviar: Avruga 120Gm Jar (Each)  | 07CAVA00E0T    |
| Caviar: Beluga 50Gm Jar (Each) <i>*Special order only</i>              | 07CAVB00E0I    |
| Caviar: Baerial - Nordic Royal (30Gm Each) <i>*Special order only</i>  | 07CAVBACA00E0E |
| Caviar: Baerial - Nordic Royal (250Gm Each) <i>*Special order only</i> | 07CAVBACA00E1M |
| Roe: Lumpfish - Red (100Gm Jar)  | 07ROER00E0Q    |
| Roe: Lumpfish - Black (100Gm Jar)                                      | 07ROEB00E0Q    |
| Caviar: Mullet Bottarga (Kg)   | 07BOTMU00K0A   |



(Tobiko Flying Fish Roe  
& Salmon Keta)



# ROES & CAVIARS

---

| DESCRIPTION   | CODE         |
|---|--------------|
| Caviar: Oscietra 30Gm Jar (Each) <i>*Special order only</i>     | 07CAVO00E0E  |
| Caviar: Oscietra 50Gm Jar (Each) <i>*Special order only</i>     | 07CAVO00E0I  |
| Caviar: Salmon Keta 100Gm Jar (Each) <i>*Special order only</i> | 07CAVK00E0Q  |
| Caviar: Sevruga 30Gm Jar (Each) <i>*Special order only</i>      | 07CAVS00E0E  |
| Roe: Tobiko Flying Fish Roe - Green 80Gm Jar (Each)             | 07ROEFG00E0N |
| Roe: Tobiko Flying Fish Roe - Orange 80Gm Jar (Each)            | 07ROEFO00E0N |
| Roe: Tobiko Flying Fish Roe - Red 80Gm Jar (Each)               | 07ROEFR00E0N |
| Roe: Tobiko Flying Fish Roe - Yellow 80Gm Jar (Each)            | 07ROEFY00E0N |
| Roe: Tobiko Flying Fish Roe - Black 80Gm Jar (Each)             | 07ROEFB00E0N |
| Caviar: Trout 100Gm Jar (Each)                                  | 07CAVKT00E0Q |
| ASC-Trout: Roe (250Gm Nett Weight Pack) <i>*ASC Certified</i>   | 19TROR00E1M  |
| Roe: Sea Urchin - 50Gm Jar (Each)                               | 07ROEU00E0I  |

# SEAWEED & SEA VEGETABLES

---

## SEAWEED

DESCRIPTION

CODE

Seaweed: Dulce 1Kg Pack (Each)

04SEAWD00E0A

Seaweed: Kombu 1Kg Pack (Each)

04SEAWK00E3Q

Seaweed: Sea Lettuce 1Kg Pack (Each)

04SEAWL00E3Q

Seaweed: Wakame 1Kg Pack (Each)

04SEAWW00E0A

Seaweed: Nori 1Kg Pack (Each)

04SEAWN00E0A

## OTHER

DESCRIPTION

CODE

Samphire: Pickled 500Gm Jar (Each)

07SAM00E2N



(Seaweed:  
Wakame)

# ALTERNATIVES

---

## MISCELLANEOUS

| DESCRIPTION                        | CODE        |
|------------------------------------|-------------|
| Cephalopod: Ink - Sachets (Each)   | 07SQU00E0B  |
| Cephalopod: Ink - 500MI Jar (Each) | 07SQU00E6Q  |
| Cod: Roe (Kg)                      | 07ROEC00K0A |
| Soup: Crab (0.85Ltr)               | 07CRAS00E6V |
| Soup: Fish (0.85Ltr)               | 07FISS00E6V |
| Soup: Lobster (0.85Ltr Jar)        | 07LOBS00E6V |






## Get In Touch

Whatever your preferred method of contact, we are here to help.

**Tel: 01206 584 790**

**Email: [sales@directseafoods.co.uk](mailto:sales@directseafoods.co.uk)**

 [direct\\_seafoods](https://www.instagram.com/direct_seafoods)  [@Direct\\_Seafoods](https://twitter.com/Direct_Seafoods)  [DirectSeafoods](https://www.facebook.com/DirectSeafoods)  [Direct Seafoods](https://www.linkedin.com/company/Direct-Seafoods)  
Youtube & Pinterest: Direct Seafoods

Manage your account online and try our new  FreshFoodHub App.  
Please click on the website link to register.

[www.directseafoods.co.uk](http://www.directseafoods.co.uk)

